




Total squares **50.2sq**

 **5**  **3**  **2**



GROUND FLOOR



FIRST FLOOR

**FLOORPLAN OPTIONS**

All available ready-to-go floorplan options for this design can be viewed on the following pages, or visit [www.burbank.com.au](http://www.burbank.com.au).

**Facades available:**




Condor, Matisse, Monet, Aqua	Residence	408.4m <sup>2</sup>	44.0sq
Hester, Metropolitan, Orana	Garage	36.5m <sup>2</sup>	3.9sq
Rainforest	Porch	4.0m <sup>2</sup>	0.4sq
<b>Overall home width</b>	<b>Overall home length</b>	<b>10.31m</b>	<b>23.87m</b>
	Alfresco	12.9m <sup>2</sup>	1.4sq
<b>Overall home length</b>	<b>Total</b>	<b>466.5m<sup>2</sup></b>	<b>50.2sq</b>

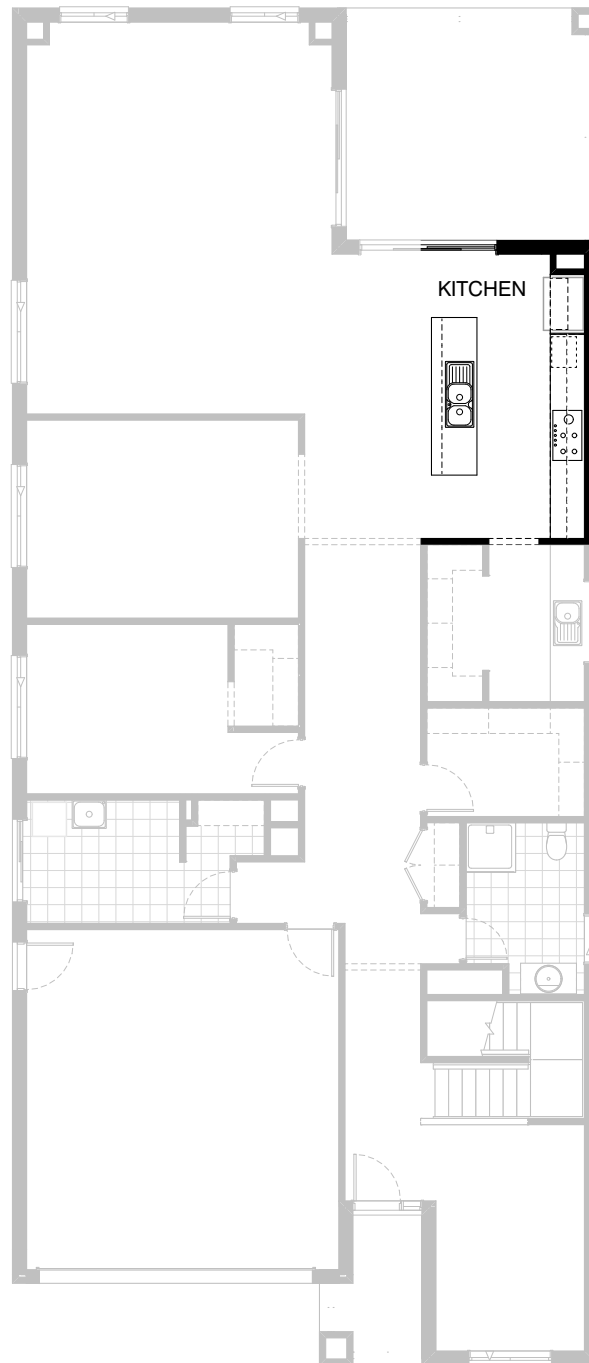
Listed details based on Condor façade floorplan (illustrated)

\*Copyright conditions. All photos and illustrations are representative only. Floor plans and specifications may be varied by Burbank without notice, the dimensions are diagrammatic only and a Building Contract with final drawings will display correct dimensions and detail. All designs are the property of Burbank and must not be used, reproduced, copied or varied, wholly or in part without written permission from an authorised Burbank representative. Copyright Burbank Australia Pty Ltd. ABN 91 007 099 872. Builders Registration Number CDB-U-52603.

**Call 13 BURBANK**  
**Visit [burbank.com.au](http://burbank.com.au)**

**FLOORPLAN OPTIONS**




 **5**    **3**    **2**

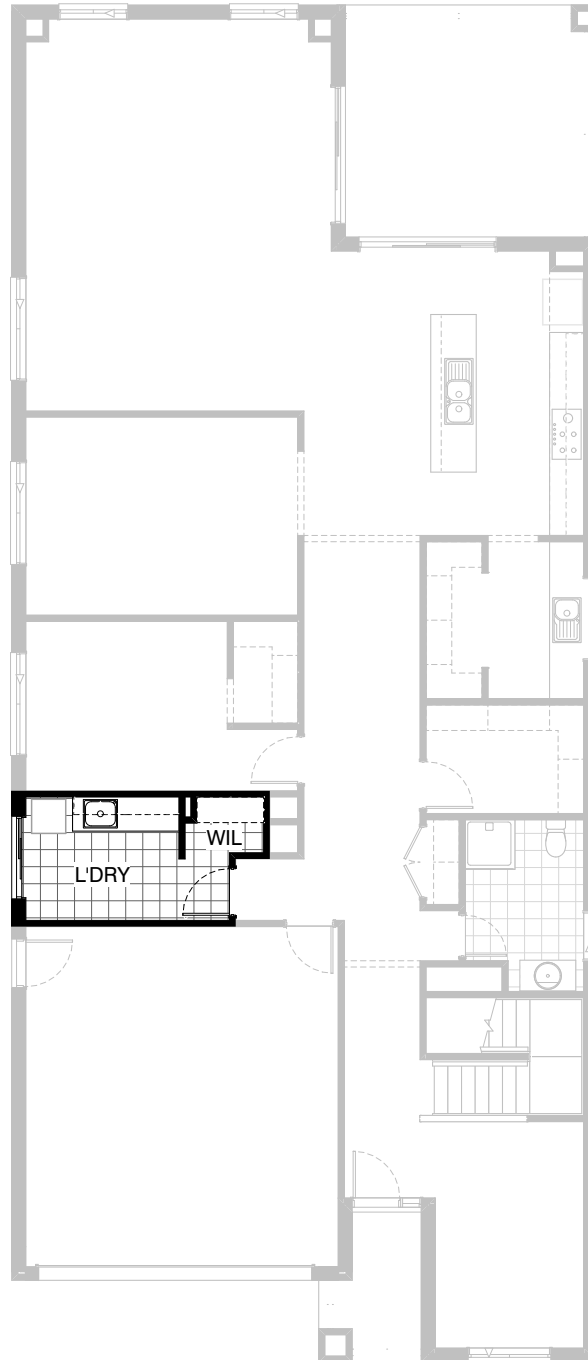


**Option K-1**

Provide Kitchen Upgrade with 2no. 800mm base cabinets,  
2no. 700mm base cabinets,  
1no. 450mm drawer unit, 1no. 600mm pot drawers,  
2no. 600mm and 2no. 700mm overhead cabinets,  
1no. laminated MW. provision with pot drawer below,  
1no. laminated DW. provision with additional bench top and  
tiled splashback to suit.  
Provide standard appliances.  
1no. 900mm laminated open shelf above refrigerator space.

**FLOORPLAN OPTIONS**




 **5**    **3**    **2**

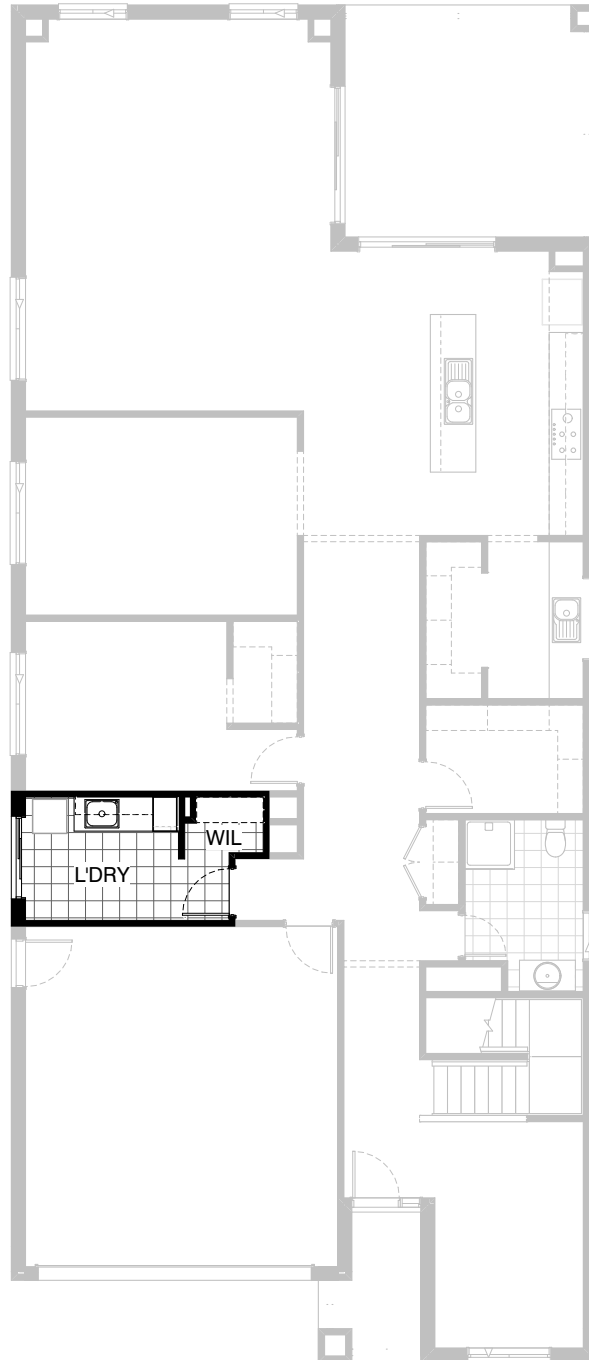


**Option LD-1**

Provide Laundry Upgrade with s.s. inset trough  
in 32mm laminated bench top.  
2no. 900mm base cabinets and 2no. 900mm overhead cabinets  
and additional tiled splashback and bench top to suit.

**FLOORPLAN OPTIONS**

 **5**    **3**    **2**



**Option LD-2**

Provide Laundry Upgrade with s.s. inset trough  
in 32mm laminated bench top.  
1no. 400mm broom cupboard.  
1no. 450mm and 900mm base cabinets  
and 1no. 450mm and 900mm overhead cabinets  
and additional tiled splashback and bench top to suit.

**FLOORPLAN OPTIONS**



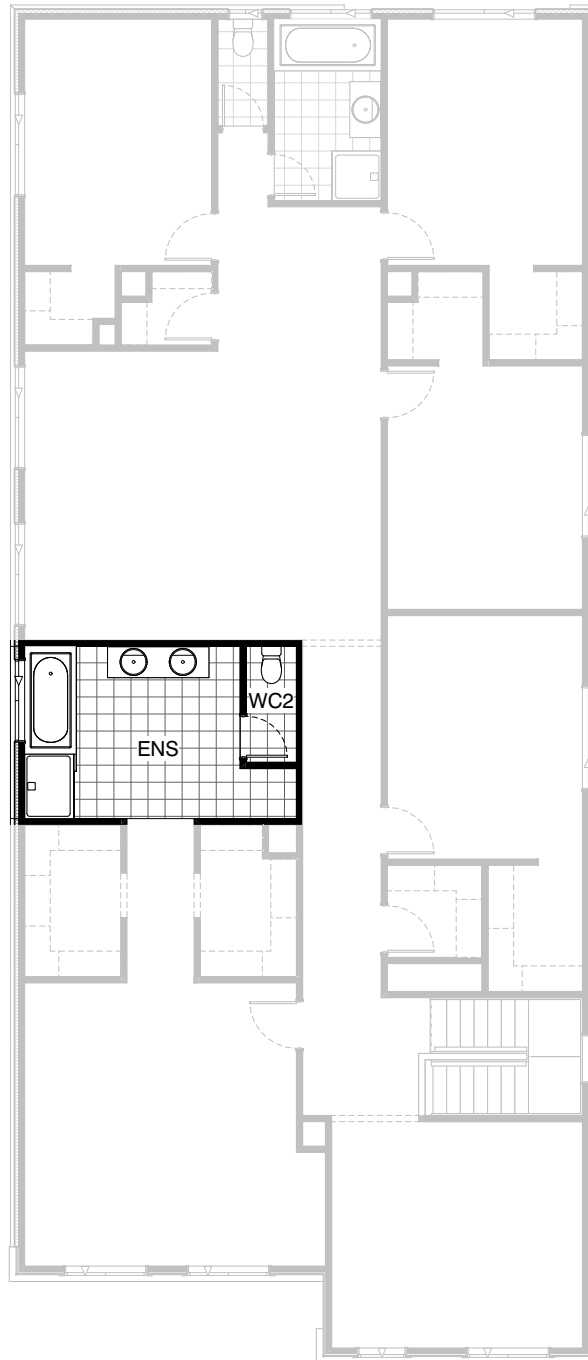
**5**



**3**






**2**

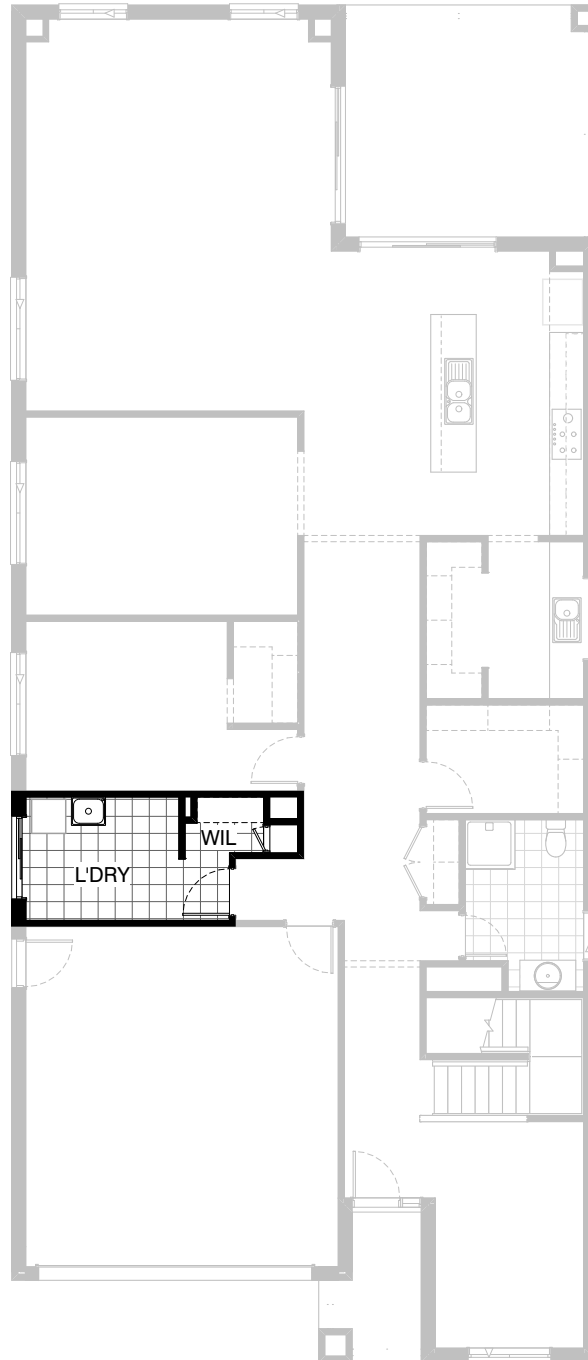


**Option ENS-1 FF**

Provide Ensuite Upgrade with  
1200mm x 900mm polymarble shower base in  
lieu of standard and additional basin to vanity unit.

**FLOORPLAN OPTIONS**

 **5**    **3**    **2**



**Option IP1-3 GF**

Provide Laundry chute.

**FLOORPLAN OPTIONS**



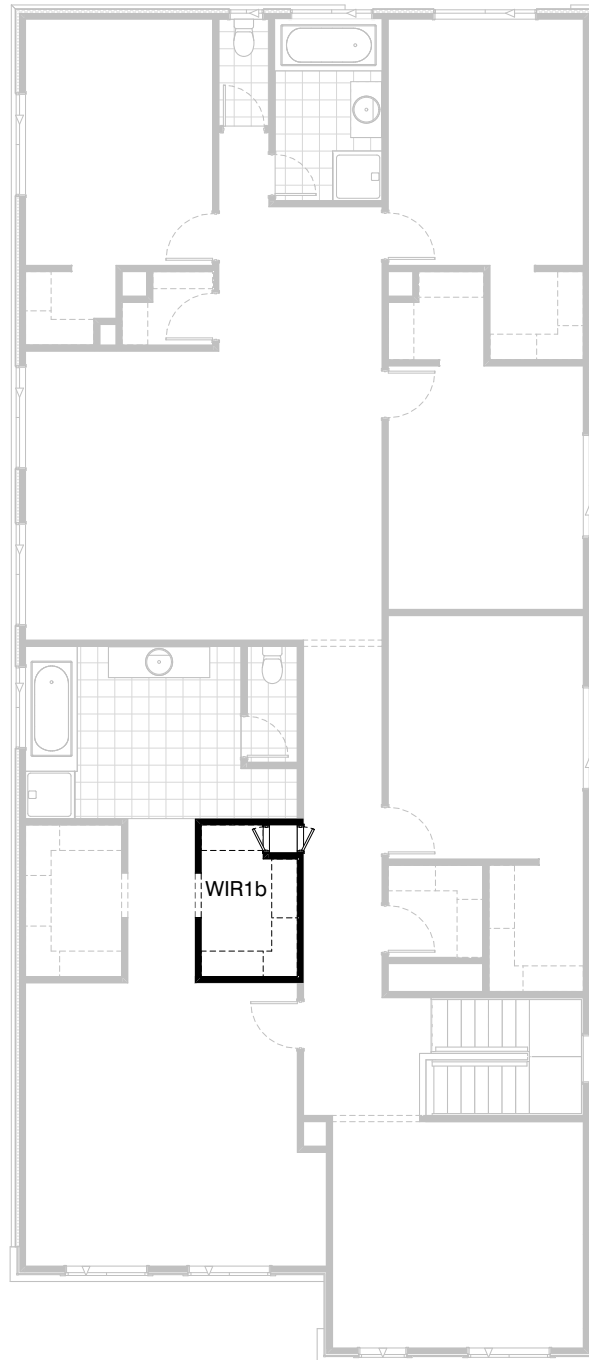
**5**



**3**






**2**

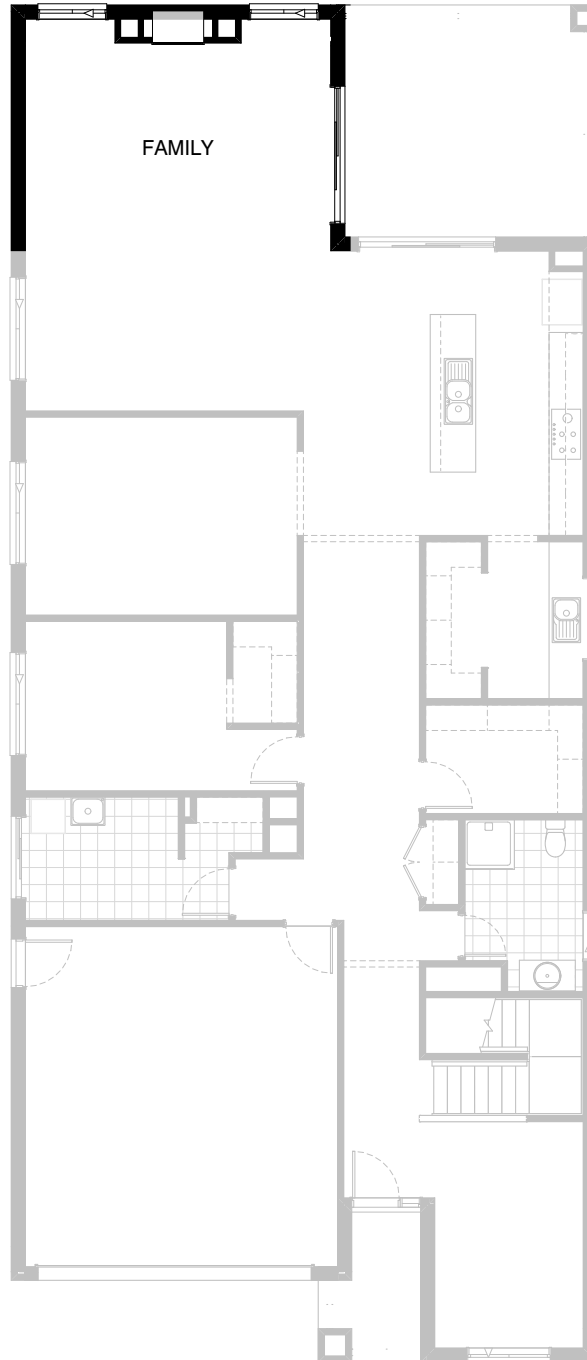


**Option IP1-3 FF**

Provide Laundry chute.

**FLOORPLAN OPTIONS**

 **5**    **3**    **2**






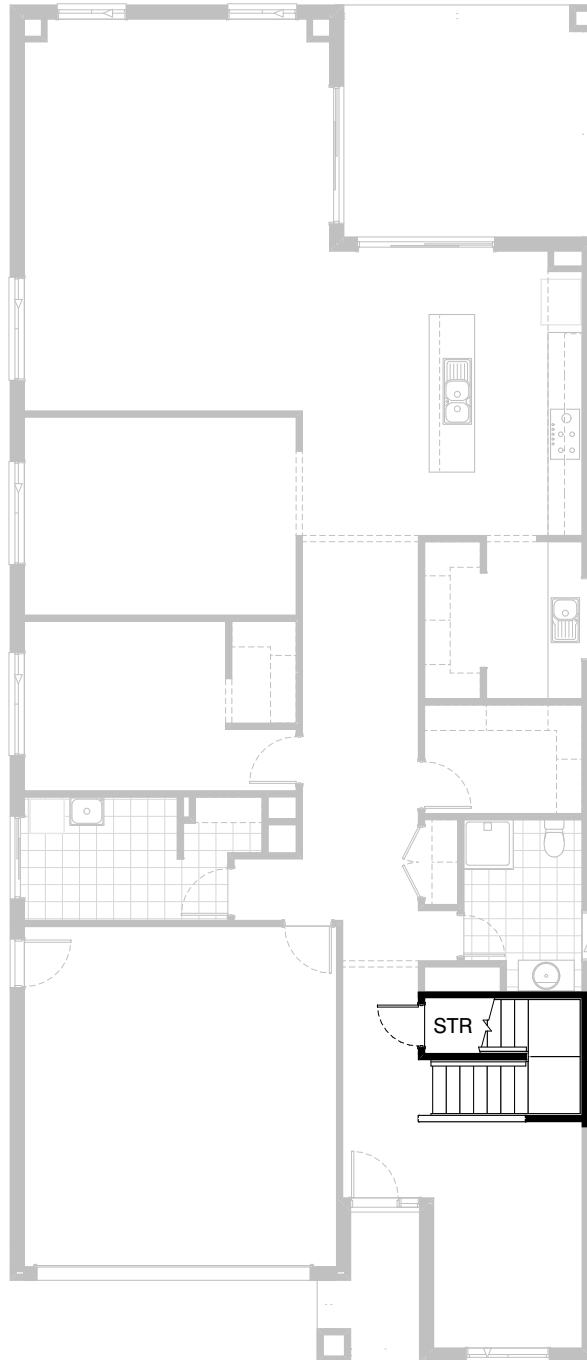
**Option IP1-1 GF**

Provide Real Flame Inspire 900 gas fireplace,  
400mm off floor level in a 1400mm x 420mm  
boxed out plaster wall with a 4 sided black  
fascia to Family room rear wall.  
Relocate plumbing stack, void and 2no.  
Family room windows to suit.



**FLOORPLAN OPTIONS**

 **5**    **3**    **2**



**Option IP1-2 GF**

Provide Store room below stair including 720mm flush panel hinged door, plaster lined walls and raked plaster ceiling on battens with square set cornice including additional light point.

NOTE: Flooring not included

**FLOORPLAN OPTIONS**



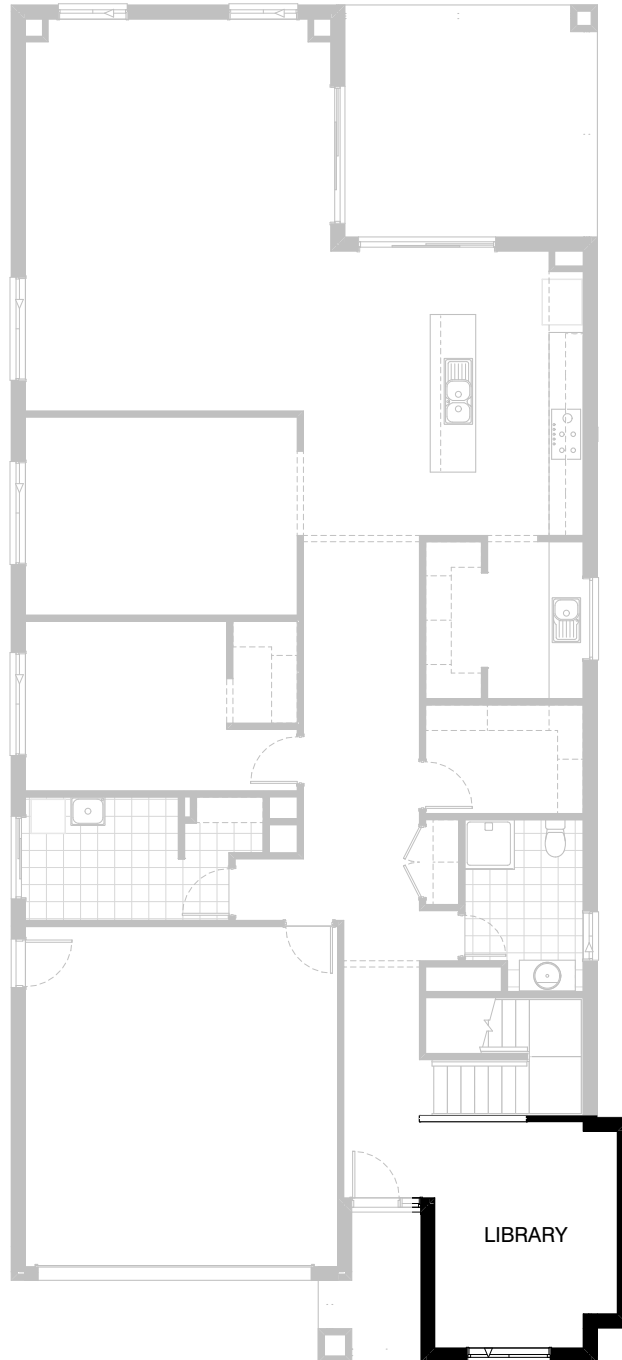
**5**



**3**






**2**

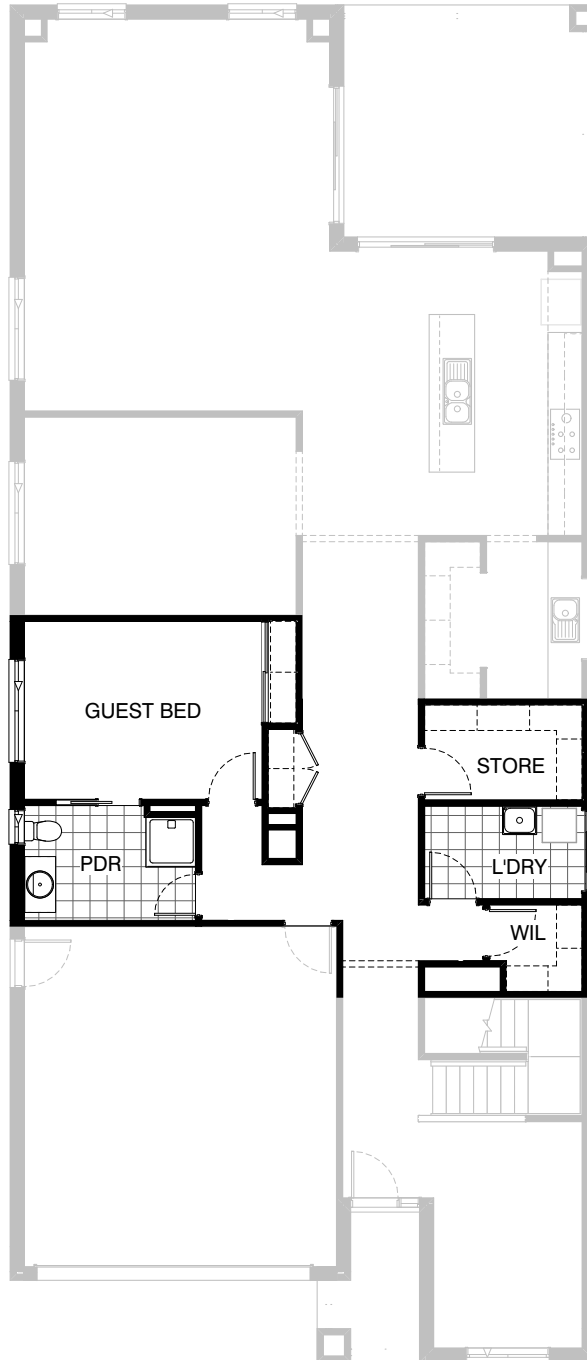


**Option IP1-4 GF**

Provide Library Option by extending  
Library wall width by 600mm with brick  
parapet flat roof above.  
Increase area by 2.23m<sup>2</sup>  
Increases width by 600mm.

**FLOORPLAN OPTIONS**

 **5**    **3**    **2**



**Option IP1-5 GF**




Provide Guest bedroom Option in lieu of Gym including additional 1no. sliding robe doors and plaster lined robe with 1no. hanging rail and shelf in lieu of W.I.R..

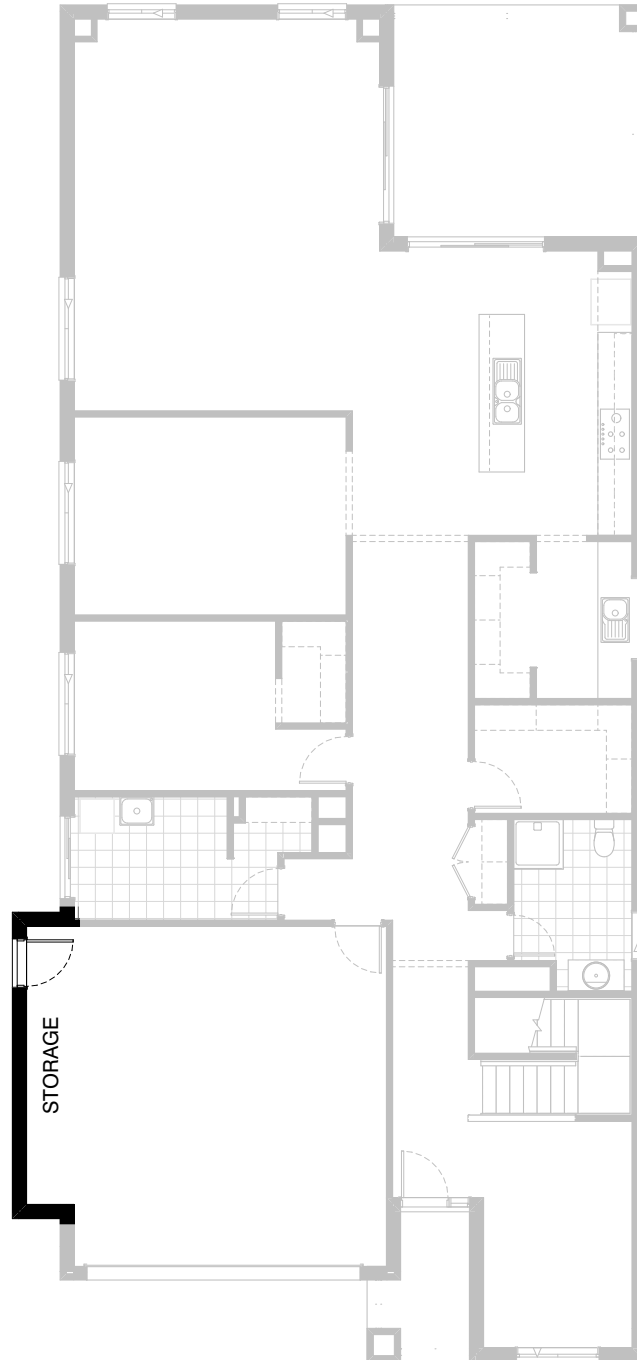
Relocate Laundry and W.I.L with Powder and provide additional 1no. 900mm x 900mm polymarble shower base,

1no. 1027mm x 610mm aluminium sliding window in lieu of standard 1no. 1800mm x 850mm aluminium sliding window and additional 1no. 720mm cavity sliding door.

Decrease Store room length by 240mm, relocate Linen cupboard to suit and provide 1no. 820mm flush panel hinged door to W.I.L with additional to suit.

**FLOORPLAN OPTIONS**




 **5**    **3**    **2**

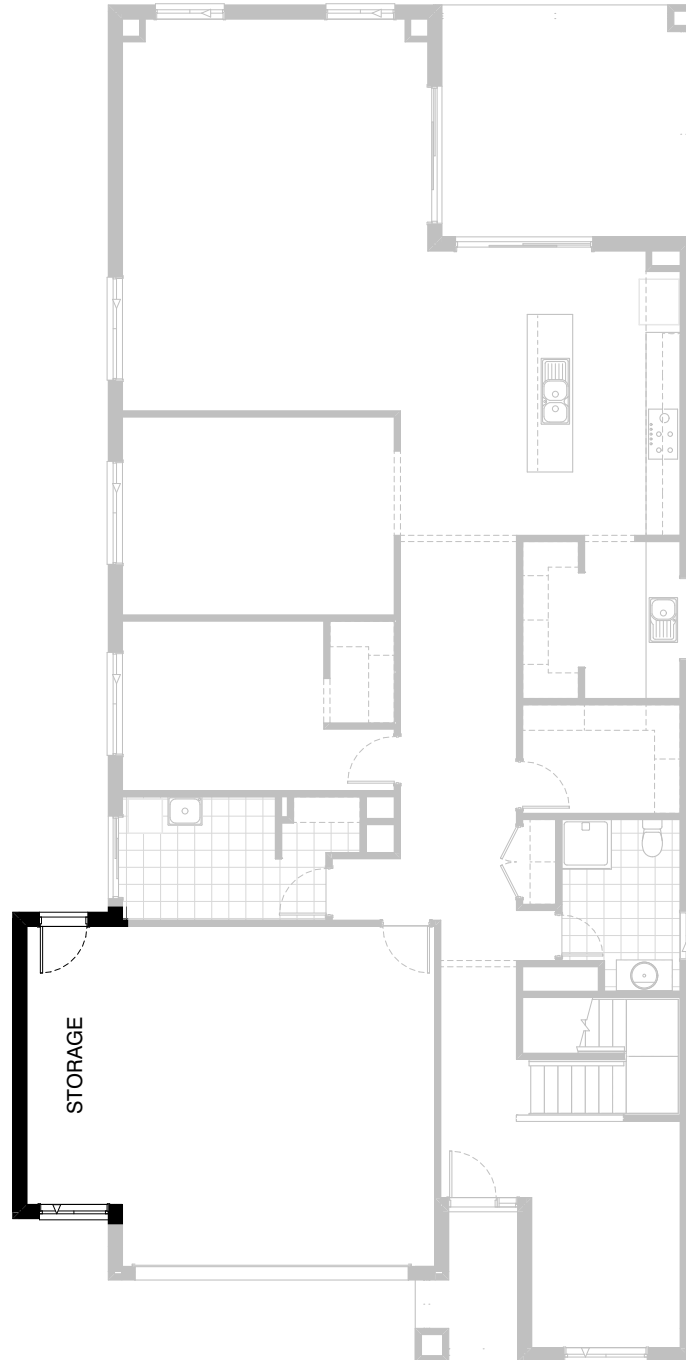


**Option G-1**

Provide extension to Garage to create additional Storage area.  
Provide pitched roof and lightweight cladding ('Scyon Stria') above.  
Increases area by 4.53m<sup>2</sup>.  
Increases width by 840mm.

**FLOORPLAN OPTIONS**

 **5**    **3**    **2**






**Option G-2**

Provide extension to Garage to create Storage area including additional 2057 x 1210 feature aluminium awning window.

Provide pitched roof and lightweight cladding ('Scyon Stria') above.

Increases area by 9.46m<sup>2</sup>.  
Increases width by 1680mm.

**FLOORPLAN OPTIONS**




 **5**    **3**    **2**

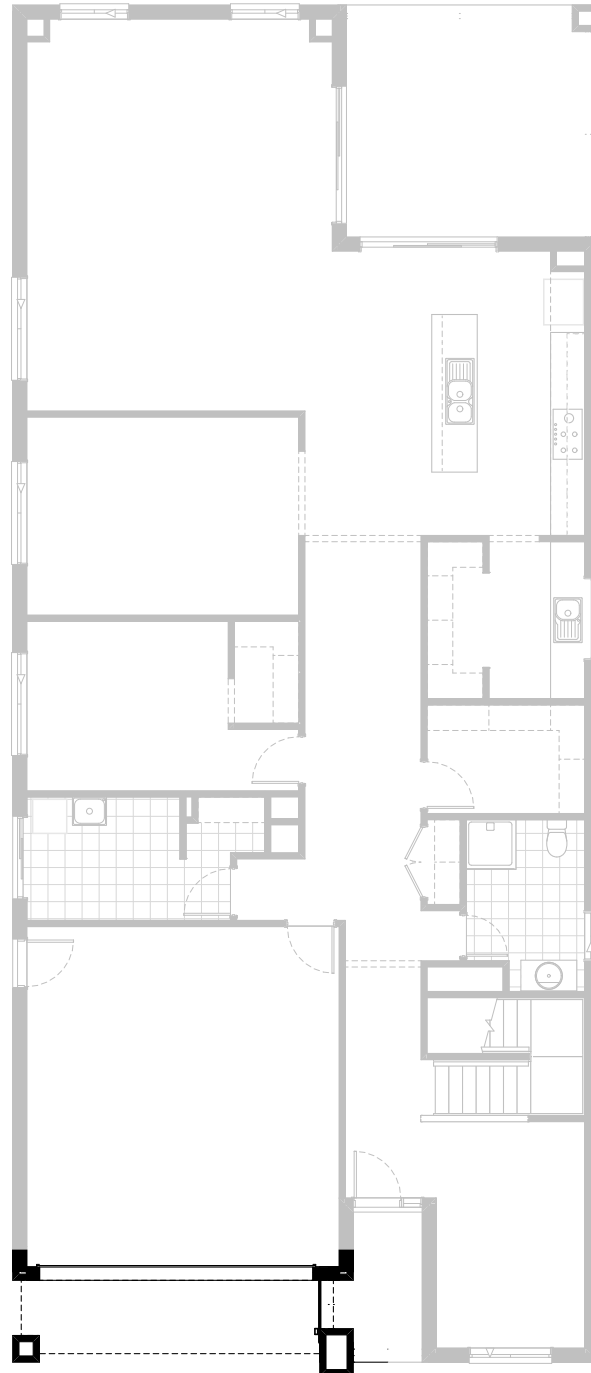


**Option G-3**

Provide triple car Garage including additional  
Garage door as per colour selection.  
Provide pitched roof and lightweight cladding  
(‘Scyon Stria’) above.  
Increases area by 23.29m<sup>2</sup>.  
Increases width by 3600mm.

**FLOORPLAN OPTIONS**




 **5**     **3**     **2**



**Option BA-1 GF**

Provide Balcony Option.

**FLOORPLAN OPTIONS**

 **5**    **3**    **2**



**Option BA-1 FF**

Provide Balcony Option to Bed 1.